

Lake Pepin

LEGACY ALLIANCE .ORG

A Community Organization





August 2019



August 2021

“There is no power for change greater than a community discovering what it cares about.”

Margaret J. Wheatley



LPLA's Priorities

Reduce Pollution	Monitor Conditions	Improve Water Quality, Habitat, and Public Access	Build a Coalition	Celebrate
Education & Advocacy	Government Accountability	Restoration	National Heritage Area	Art & Culture





Reducing sediment pollution with innovative solutions.

Continuous Living Cover (CLC) relies on diversified crops to protect water during shoulder seasons when traditional agriculture leaves land bare and more susceptible to erosion (sending topsoil to Lake Pepin). As research develops commercially viable perennial and winter annual crops, CLC is becoming a scalable solution to our most pressing water quality challenges.



JUNE 18
PERENNIALS FOR LAND & WATER

KernzaFest

OHUTA PARK LAKE CITY

Cooking Demos with
**Chef Via Vang
& Chef Jametta
Raspberry**

Music from
**Roe Family
Singers**

Perennial
**Food Tasting
Tent**

Local
**Kombucha
Beer &
Foodtrucks**

Local Art
& Farmers
Market

Activities for
kids of
all ages!

Expert
Speakers
will be covering:
**Perennial Cover Crops
Soil/Water & Climate
Regenerative Fiber Farming
Stewardship Grazing**



Monitoring Conditions



Boater Safety & Education



DANGER

BOATING HAZARD WARNING!!

- DO NOT LEAVE THE CHANNEL IN THIS AREA
- DO NOT PASS BARGES IN THIS AREA



WARNING TO ALL BOATS — The channel quickly narrows and there is hard ground on the Minnesota side of the channel at this point. Barges frequently ground here and you are advised not to pass any barge at this point. Grounding and severe damage to hull and drives by rocks and hard ground has frequently occurred here.



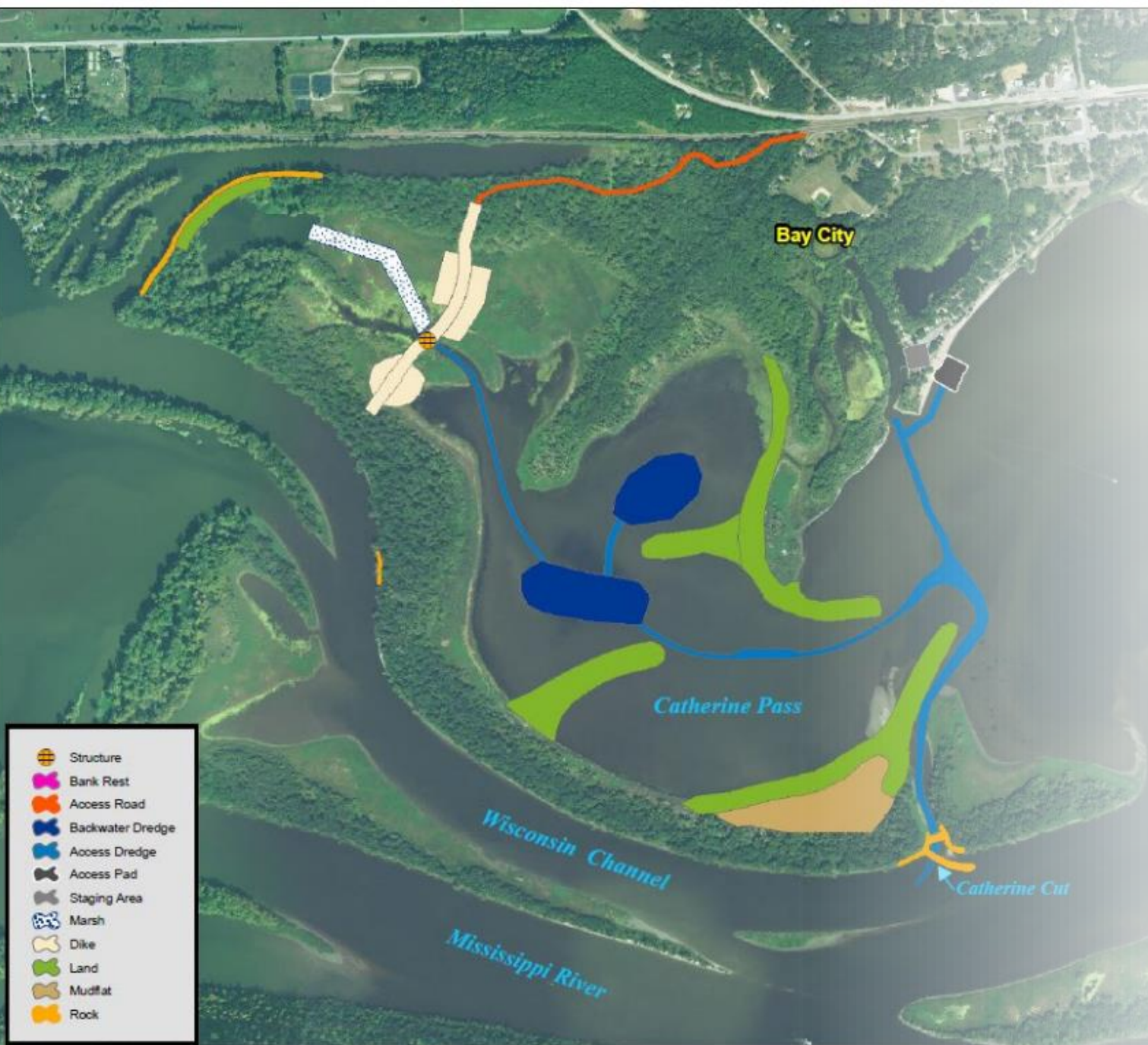
For more information -
www.lakepepinlegacyalliance.org



Restoring Fish & Waterfowl Habitat

- 24-million-dollar habitat restoration project and small boat access channel.
- 1 of 10 projects nationwide to be selected for a federal pilot program (and the only project on the entire Mississippi River).
- Contract will be awarded this summer with construction to begin next spring.

	Structure
	Bank Rest
	Access Road
	Backwater Dredge
	Access Dredge
	Access Pad
	Staging Area
	Marsh
	Dike
	Land
	Mudflat
	Rock



Upper Pool 4 - Mississippi River - Section 1122 - Tentatively Selected Plan



Questions?

Contact Information

Rylee Hince (630) 806 – 9909

rylee@lakepepinlegacyalliance.org

Alex Keilty (650) 676 – 9252

alex@lakepepinlegacyalliance.org